

# CAS heavy-duty pressure switches



In the CAS pressure switches series, special attention has been given to meeting demands for a high level of enclosure, low differential, robust, compact construction and resistance to shock and vibration. The CAS series covers most outdoor as well as indoor application requirements. CAS pressure switches are suitable for use in alarm and regulation systems in factories, diesel plant, compressors, power stations and on board ships.

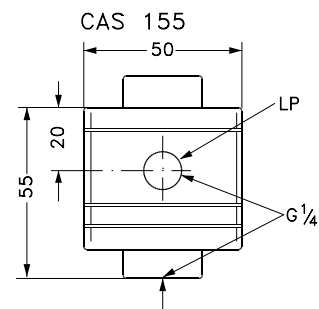
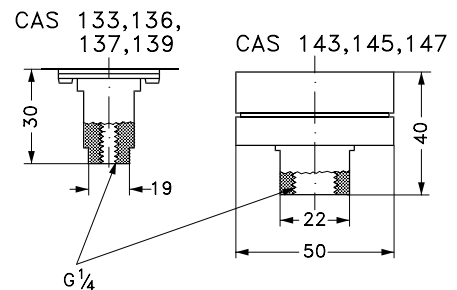
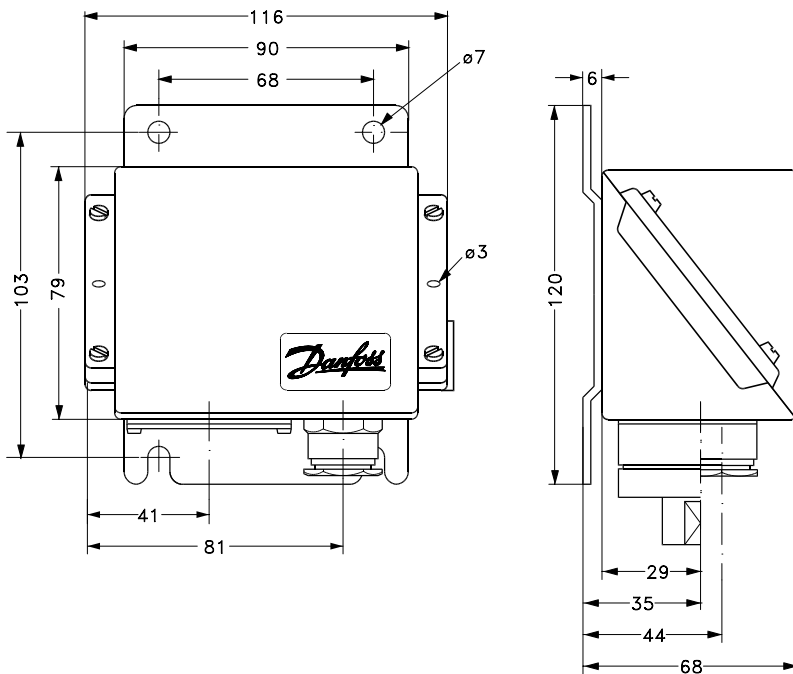
- Pressure range: 0 – 60 bar
- Low differential (fixed) micro switch
- Enclosure IP67. Sturdy and sea water resistant
- Robust and compact construction
- Resistance to shock and vibrations
- Diaphragm version applications with: Pulsations/pressure peaks and seawater as media
- Also available as differential pressure switch
- Available with all relevant land and marine approvals

## Dimensions and weight:

Weight:

CAS 133 – 139 1.0 kg.

CAS 143 – 147 1.3 kg.



All dimensions in millimetres

Approvals: CE marked in accordance with EN 60947-5. All relevant land and marine approvals.

## CAS Heavy-duty pressure switches

Contact type: Single pole double throw (SPDT)  
 Loads: AC-1 (ohmic)  
 AC-3 (motor)  
 AC15 (inductive) 0.1 A 220V  
 Pressure connection: G ¼ A



Type	Setting range P <sub>e</sub> [bar]	Differential [bar]	Max. working pressure P <sub>e</sub> [bar]	Code number
------	---------------------------------------	-----------------------	---	-------------

Ambient temperature: -40 – 70 °C. Media temperature: -40 – 100 °C.

CAS133	0 – 3.5	0.1	10	<b>060-315066</b>
CAS136	0 – 10	0.2	22	<b>060-315166</b>
CAS137	6 – 18	0.3	27	<b>060-315266</b>
CAS139	10 – 35	0.6	53	<b>060-315366</b>

### CAS pressure switches for high pressure and strongly pulsating media

Ambient temperature: -25 – 70 °C. Media temperature: -25 – 100 °C.

CAS143	1 – 10	0.2 – 0.6	120	<b>060-316066</b>
CAS145	4 – 40	0.8 – 2.4	120	<b>060-316166</b>
CAS147	6 – 60	1 – 3	120	<b>060-316266</b>

## CAS differential pressure switch

Pressure connection: 2 x G ¼. Ambient temperature: -25 – 70 °C



## Spare parts for CAS pressure switch

Description	Code numbers
Connector with nipple. Pipe thread ISO 228/1, G ¾ connector, nipple and AL washer (10 mm ext. / 8 mm int. diam). for soldering onto steel or copper tubing. Steel span of jaws: 22	<b>017-436866</b>
Connector with nipple. G ¾ connector nipple and washer (10 mm ext. / 6.5 mm int. diam). For welding. Steel span of jaws: 22	<b>017-422966</b>
Reducer. G ¾ x 7/16 - 20 UNF (¼ flare) reduction with washer	<b>017-420566</b>
Adaptor G ¾ A x ¼ - 18 NPT with washer	<b>060-333666</b>
Nipple G ¼ A x G ¾ A	<b>060-333266</b>
Damping coil with G ¾ connectors and 1.5 m copper capillary tube	<b>060-104766</b>
Armoured damping coil with ¾ connectors and 1 m armoured capillary tube. Standard washers included.	<b>060-333366</b>

