

hp-Compact Twin-pumping unit Series BIKO

hp-Twin-pumping unit in screwed-on or flanged (SAE flange to DIN ISO 6162) design are used as feed or pressure unit according to TRD 411 or TRD 604 and DIN 4755-2 must be constructed, tested, registered and labelled according to standard DIN EN 12514-1.

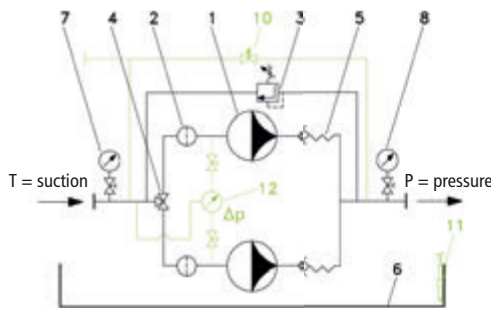
The BIKO series is available in 2 designs (L - light oil and S - HFO). It can optionally be used for 1- or 2-pipe system (simple conversion by the user). The selection for use a feed ¹⁾ or pressure unit is determined by the selection of pressure stages.



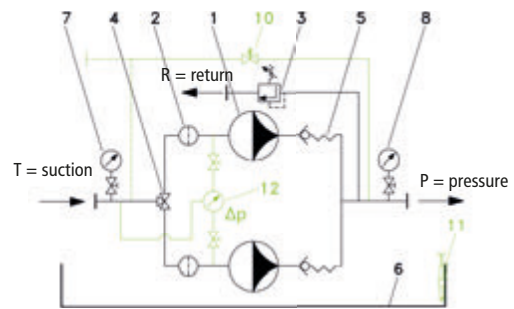
General specifications:

Viscosity range:	Motor capacities of the modules are designed for:
	- BIKO-L to 80 cSt.
	- BIKO-S to 150 cSt.
	Please ask for any differing conditions.
max. permitted underpressure:	Measured on the manometer item 7 ≤ -0.4 bar
max. system pressure:	5 bar
Casing material:	EN-GJS 400

BIKO Scheme 1-pipe-system



BIKO Scheme 2-pipe-system



Scope of supply:

- | | |
|-----------------------------|-------------------|
| 1 hp-Motor pump group | 5 Nonreturn valve |
| 2 Filter | 6 Oil pan |
| 3 Integrated overflow valve | 7 Vacuum gauge |
| 4 Switchover | 8 Pressure gauge |

Optional accessories:

- | |
|--|
| 10 Pressure compensation device ²⁾
(pressure setting corresponding to selected pressure stage) |
| 11 Leakage detector |
| 12 Filter indicator (opt./ opt.-elec.) |

Model key for determining order specifications

Series	hp Hydraulics size	hp Motor code	Pressure stage	Accessories
BIKO-L Design for fuel oil EL + L, MDO/MGO	Hydraulics size	Selection suited to pressure needed	2 = 2 - 9 bar	LH Oil pan equipped with leakage detector DB Additional pressure compensation device (safety valve set at: Pressure stage 2 = 7 bar; pressure stage 4 = 45 bar)
BIKO-S Design for fuel oil M, S + ES, mineral tar oil	(see data tables)	(see data tables)	4 = 6 - 40 bar	A Electrical auxiliary heating E1 With optical filter indicator E2 With optical and electrical filter indicator (E1 and E2)

¹⁾ When used as feed unit for fuel oil supply to DIN EN 12514, the maximum operating pressure of 6 bar must not be exceeded.

²⁾ Additional protection against overpressure – optional integration into the suction or return line or directly into the tank.

hp-Compact Twin-pumping unit Series BIKO

Design for normal fuel

Unit model	Design max. pressure 9 bar				Design max. pressure 30 bar				Design max. pressure 40 bar				Aggregate dimension	Device connections*			
	hp-Hydraulics size	Discharge at 1400 RPM at 0- 9 bar	hp-Motor code	Motor power [kW]	hp-Item no.:	Discharge at 1400 RPM at 30 bar	hp-Motor code	Motor power [kW]	hp-Item no.:	Discharge at 1400 RPM at 40 bar	hp-Motor code	Motor power [kW]		hp-Item no.:	Suction screw-fitted	Suction flanged	Pressure & Return screw-fitted
BIKO-L- 01	01					30	01	0.18	0525050	-	-	-	800 x 675	G 3/4"	SAE 3/4"	G 1 1/2"	SAE 1/2"
BIKO-L- 02	80	01	0.18	0525052	60	01	0.18	0525052	-	-	-	800 x 675	G 3/4"	SAE 3/4"	G 1 1/2"	SAE 1/2"	
BIKO-L- 03	120	01	0.18	0525054	100	01	0.18	0525054	-	-	-	800 x 675	G 3/4"	SAE 3/4"	G 1 1/2"	SAE 1/2"	
BIKO-L- 04	160	01	0.18	0525056	140	03	0.37	0525058	-	-	-	800 x 675	G 3/4"	SAE 3/4"	G 1 1/2"	SAE 1/2"	
BIKO-L- 05	300	01	0.18	0525060	240	05	0.75	0525062	200	05	0.75	0525062	800 x 675	G 3/4"	SAE 3/4"	G 1 1/2"	SAE 1/2"
BIKO-L- 06	450	03	0.37	0525064	390	05	0.75	0525066	360	06	1.1	0525068	800 x 675	G 3/4"	SAE 3/4"	G 1 1/2"	SAE 1/2"
BIKO-L- 07	600	03	0.37	0525070	540	06	1.1	0525072	480	07	1.5	0525074	800 x 675	G 3/4"	SAE 3/4"	G 1 1/2"	SAE 1/2"
BIKO-L- 08	1000	05	0.75	0525076	700	07	1.5	0525078	600	08	2.2	0525080	900 x 800	G 1"	SAE 1"	G 3/4"	SAE 3/4"
BIKO-L- 09	1500	05	0.75	0525082	1200	08	2.2	0525084	1000	09	3.0	0525086	900 x 800	G 1"	SAE 1"	G 3/4"	SAE 3/4"
BIKO-L- 10	2000	06	1.1	0525088	1700	09	3.0	0525090	1400	10	4.0	0525092	900 x 800	G 1"	SAE 1"	G 3/4"	SAE 3/4"
BIKO-L- 11	3000	07	1.5	0525094	2200	10	4.0	0525096	2000	11	5.5	0525098	1100 x 950	G 1 1/2"	SAE 1/2"	G 1 1/4"	SAE 1/4"
BIKO-L- 11-1	3700	07	1.5	0525100	3000	10	4.0	0525102	2700	11	5.5	0525104	1100 x 950	G 1 1/2"	SAE 1/2"	G 1 1/4"	SAE 1/4"
BIKO-L- 12	4500	08	2.2	0525106	3600	11	5.5	0525108	3200	12	7.5	0525110	1100 x 950	G 1 1/2"	SAE 1/2"	G 1 1/4"	SAE 1/4"
BIKO-L- 13	6000	09	3.0	0525112	4800	12	7.5	0525114	-	-	-	1100 x 950	G 1 1/2"	SAE 1/2"	G 1 1/4"	SAE 1/4"	
BIKO-L- 14	6700	09	3.0	0525116	5800	12	7.5	0525118	-	-	-	1100 x 950	G 1 1/2"	SAE 1 1/2"	G 1 1/4"	SAE 1/4"	

Design for HFO

Unit model	Design max. pressure 9 bar				Design max. pressure 30 bar				Design max. pressure 40 bar				Aggregate dimension	Device connections*			
	hp-Hydraulics size	Discharge at 1400 RPM at 0- 9 bar	hp-Motor code	Motor power [kW]	hp-Item no.:	Discharge at 1400 RPM at 30 bar	hp-Motor code	Motor power [kW]	hp-Item no.:	Discharge at 1400 RPM at 40 bar	hp-Motor code	Motor power [kW]		hp-Item no.:	Suction screw-fitted	Suction flanged	Pressure & Return screw-fitted
BIKO-S- 01	01	50	01	0.18	0525150	45	01	0.18	0525150	-	-	-	800 x 675	G 3/4"	SAE 3/4"	G 1 1/2"	SAE 1/2"
BIKO-S- 02	90	01	0.18	0525152	80	01	0.18	0525152	-	-	-	800 x 675	G 3/4"	SAE 3/4"	G 1 1/2"	SAE 1/2"	
BIKO-S- 03	130	01	0.18	0525154	125	03	0.37	0525156	-	-	-	800 x 675	G 3/4"	SAE 3/4"	G 1 1/2"	SAE 1/2"	
BIKO-S- 04	170	01	0.18	0525158	165	03	0.37	0525160	-	-	-	800 x 675	G 3/4"	SAE 3/4"	G 1 1/2"	SAE 1/2"	
BIKO-S- 05	320	01	0.18	0525162	300	05	0.75	0525164	295	05	0.75	0525164	800 x 675	G 3/4"	SAE 3/4"	G 1 1/2"	SAE 1/2"
BIKO-S- 06	475	03	0.37	0525166	450	06	1.1	0525168	435	07	1.5	0525170	800 x 675	G 3/4"	SAE 3/4"	G 1 1/2"	SAE 1/2"
BIKO-S- 07	620	03	0.37	0525172	600	07	1.5	0525174	590	08	2.2	0525176	800 x 675	G 3/4"	SAE 3/4"	G 1 1/2"	SAE 1/2"
BIKO-S- 08	1100	05	0.75	0525178	950	08	2.2	0525180	900	09	3.0	0525182	900 x 800	G 1"	SAE 1"	G 3/4"	SAE 3/4"
BIKO-S- 09	1625	05	0.75	0525184	1475	09	3.0	0525186	1425	10	4.0	0525188	900 x 800	G 1"	SAE 1"	G 3/4"	SAE 3/4"
BIKO-S- 10	2150	06	1.1	0525190	2050	10	4.0	0525192	1975	11	5.5	0525194	900 x 800	G 1"	SAE 1"	G 3/4"	SAE 3/4"
BIKO-S- 11	3225	07	1.5	0525196	3000	11	5.5	0525198	2900	12	7.5	0525200	1100 x 950	G 1 1/2"	SAE 1 1/2"	G 1 1/4"	SAE 1/4"
BIKO-S- 11-1	3900	08	2.2	0525202	3700	11	5.5	0525204	3650	12	7.5	0525206	1100 x 950	G 1 1/2"	SAE 1 1/2"	G 1 1/4"	SAE 1/4"
BIKO-S- 12	4825	08	2.2	0525208	4750	12	7.5	0525210	4725	12	7.5	0525212	1100 x 950	G 1 1/2"	SAE 1 1/2"	G 1 1/4"	SAE 1/4"
BIKO-S- 13	6100	09	3.0	0525214	5600	-	-	-	-	-	-	1100 x 950	G 1 1/2"	SAE 1 1/2"	G 1 1/4"	SAE 1/4"	
BIKO-S- 14	6800	09	3.0	0525216	6550	-	-	-	-	-	-	1100 x 950	G 1 1/2"	SAE 1 1/2"	G 1 1/4"	SAE 1/4"	

The twin-pumping units of the BIKO series are currently under development. Therefore, not all sizes are available.

Please send your request.