

## hp-Overflow valves with flange connection for SAE-flange

### Type of actuation E: with adjustment screw

For lubricating and hydraulic oils and many other self-lubricating non-corrosive fluids. For heating oils EL, L, M, S and ES, kerosene.

Maximum temperature of fluid medium: 150°C

Material: casing (GGG 40); certificate 3.1 on request;  
piston, valve tip, spring of hardened steel

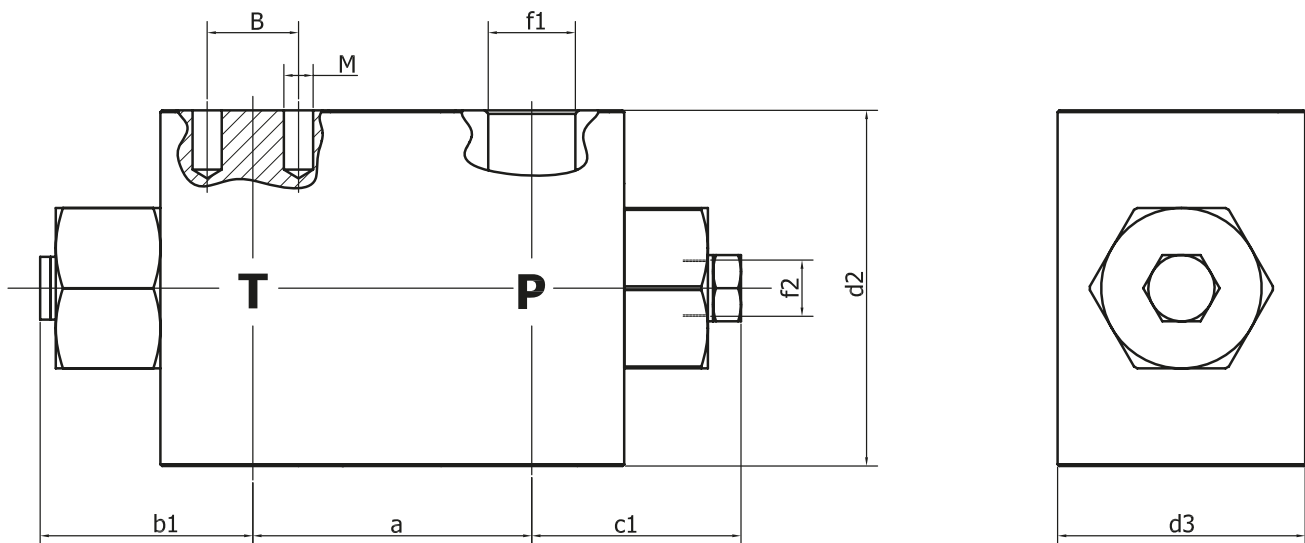
Function: Directly-controlled, spring-loaded overflow valve for maintaining a set operating pressure or a set maximum pressure in a pressure pipe.



Model	Possible pressure stages for each model	SAE flange connection	Flow range <sup>2)</sup> l/h	Viscosity range <sup>2)</sup> cSt	Item No.	Weight Kg
B - G - E - SAE 1/2"	2 = 2 - 9 bar	G 1/2"	30 - 600	2.8 to 480	027 0210	2.3
B - GH - E - SAE 3/4"	3 = 6 - 25 bar	G 3/4"	100 - 2000	2.8 to 480	027 0220	4.1
B - GHG - E - SAE 3/1"	4 = 15 - 40 bar	G1"	300 - 6000	2.8 to 480	027 0230	6.3

For installation, operation and maintenance, follow the operating instructions that come with each piece of equipment.

<sup>2)</sup> For curves see page 31



### Model with regulating screw

After removing cover screw on the regulating screw the pressure is increased by turning clockwise with an allen key. It is decreased by turning counterclockwise.

### Size table

Model	a	b1	c1	d1	d3	f1	f2	SAE-flange dimensions			
								Size	A	B	M
B - G - E - SAE 1/2"	55	51	37	68	54	Ø 13	G1/4"	1/2"	38.1	17.5	M 8
B - GH - E - SAE 3/4"	63	57	43	88	65	Ø 19	G1/4"	3/4"	47.6	22.2	M 10
B - GHG - E - SAE 1"	80	69	68	102	68	Ø 25	G1/4"	1"	52.4	26.2	M 10