

hp-Double pump feed units

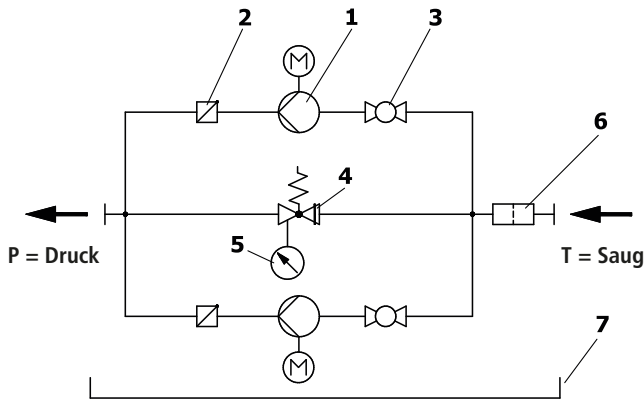
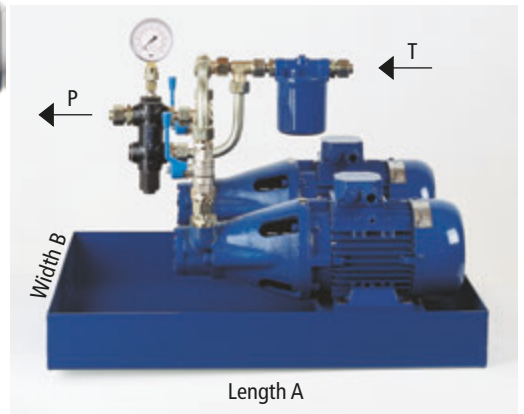
hp-Double pump units Bi-Comfort 2000 Series SMG 2200

equipped with hp-Industrial pump Series B, with rotary and alternating current motor (1400 RPM).

Feed unit constructed, tested, registered and labelled to DIN/EN 12514-1 !

The installed hp-Overflow valve is equipped in the factory with pressure stage 2, i.e. 2 to 9 bar. Pressure stage 1, i.e. 1 to 4 bar, is possible on request.

Please append the number "1" to the model description on the order.



Bi-Comfort scope of supply:

- 1 Motor pump groups
- 2 Nonreturn valve
- 3 Ball valve
- 4 Overflow valve
- 5 Manometer
- 6 Suction filter
- 7 Oil pan

Unit model	Pump model	Discharge l/h	for fuel oil EL and L (2.8 to 34 cSt.)							Filter size	Dimensions		Item No.	
			Electric motor kW		Unit connection*				Length A		Width B	Rotary current	Alternating current	
			Rotary current	Alternating current	Delivery side		Suction side							
					Thread	Pipe	Thread	Pipe						
SMG 2201	BP-I + D	45	0.18	0.18	G 3/8"	12 x 1	G 3/8"	12 x 1	G 3/8"	600	500	0410001	0410021	
SMG 2202	BM-I + D	80	0.18	0.18	G 3/8"	12 x 1	G 3/8"	12 x 1	G 3/8"	600	500	0410002	0410022	
SMG 2203	BG-I + D	120	0.18	0.18	G 3/8"	12 x 1	G 3/8"	12 x 1	G 3/8"	600	500	0410003	0410023	
SMG 2204	BF-I + D	160	0.18	0.18	G 3/8"	12 x 1	G 3/8"	12 x 1	G 3/8"	600	500	0410004	0410024	
SMG 2205	BGP-I + D	300	0.18	0.18	G 1/2"	15 x 1	G 1/2"	15 x 1	G 1/2"	600	500	0410005	0410025	
SMG 2206	BGM-I + D	450	0.37	0.37	G 1/2"	15 x 1	G 1/2"	15 x 1	G 1/2"	600	500	0410006	0410026	
SMG 2207	BGG-I + D	600	0.37	0.37	G 1/2"	15 x 1	G 1/2"	15 x 1	G 1/2"	600	500	0410007	0410027	
SMG 2208	BHP-I + D	1000	0.75	-	G 3/4"	22 x 1.5	G 3/4"	22 x 1.5	G 3/4"	800	700	0410008	-	
SMG 2209	BHM-I + D	1500	0.75	-	G 3/4"	22 x 1.5	G 3/4"	22 x 1.5	G 3/4"	800	700	0410009	-	
SMG 2210	BHG-I + D	2000	1.1	-	G 3/4"	22 x 1.5	G 1"	28 x 2	G 1"	800	700	0410010	-	
SMG 2211	BHGP-I + D	3000	1.5	-	G 1"	28 x 2	G 1 1/2"	42 x 2	G 1 1/2"	800	700	0410011	-	

Designed for $p_{max} = 6 \text{ bar}$

Model key for determining order specifications

E.g.: **SMG 2205** - ○ - ○ - ○ - ○ - ○

Series size	Pressure stage bar	Motor	Accessories	Item No.
SMG 2201 to SMG 2211	1 = 1 - 4 2 = 2 - 9	W = Alternating current D = Rotary current	LH = Oil pan equipped with oil leakage detector S ¹⁾ = with integrated electrical pressure switch for monitoring of the delivery line (pipe burst check) DF = execution with double filter (DN 15)	0720705 -1 FF4-0820290 DSF-0820292 On request

For installation, operation and maintenance, follow the operating instructions that come with each piece of equipment.

¹⁾ Note: In the place where it is fitted, as a "lower limiter" an electrical pressure switch must be provided as a pipe break check. This condition is met by selecting the "S" accessory.

* To ensure the pump is working properly, the pipes must be scaled according to the principles of fluid dynamics by calculation of line according to the local requirements.

The pump or device connection gives no indication of the relevant size of the pipe.

Note for screw-fitted design: EO pipe screw fitting for steel tube DIN 1630 and 2391, when using Cu pipe, the corresponding EO protective sleeve must be used.